

Digital Service Tools

Finding Aftertreatment Serial & Part Numbers

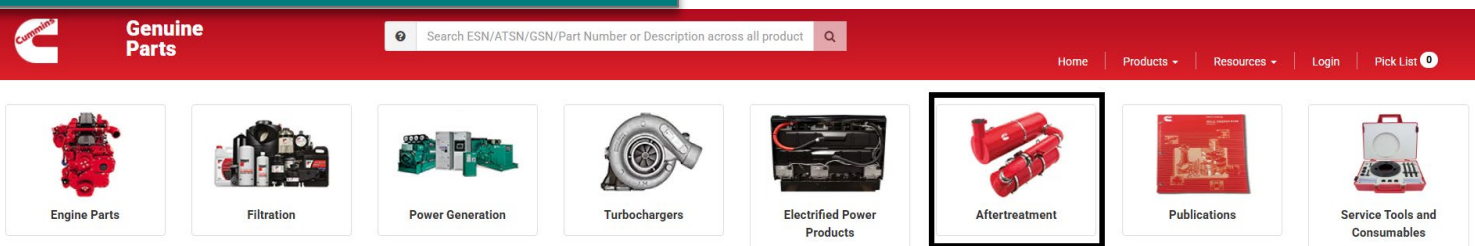
Serial Numbers VS Part Numbers

- ATSNs (Aftertreatment Serial Numbers) will be eleven digits.
- CES Part Numbers are AxxxBxxx:
 - The A or B can be different letters
 - The x will be numbers
- Cummins Part Numbers are seven digits and can be formatted with 00, 00NX or 00RX following the first seven digits. There is also potential for other letters in place of the NX or RX.

If the ATA, Not Reported by OEM

- Look for the physical Cummins part number on the existing aftertreatment assembly.
- Aftertreatment devices can contain two sections.
 - The SCR (3-piece assembly welded together behind the DPF section).
 - The DPF (DOC and DPF connected by v-band clamps).

<https://Parts.Cummins.Com>



Genuine Cummins Parts Packaging Label

New Cummins labels to support global anti-counterfeit efforts

www.cummins.com/genuinepartsauthentication



Digital Service Tools

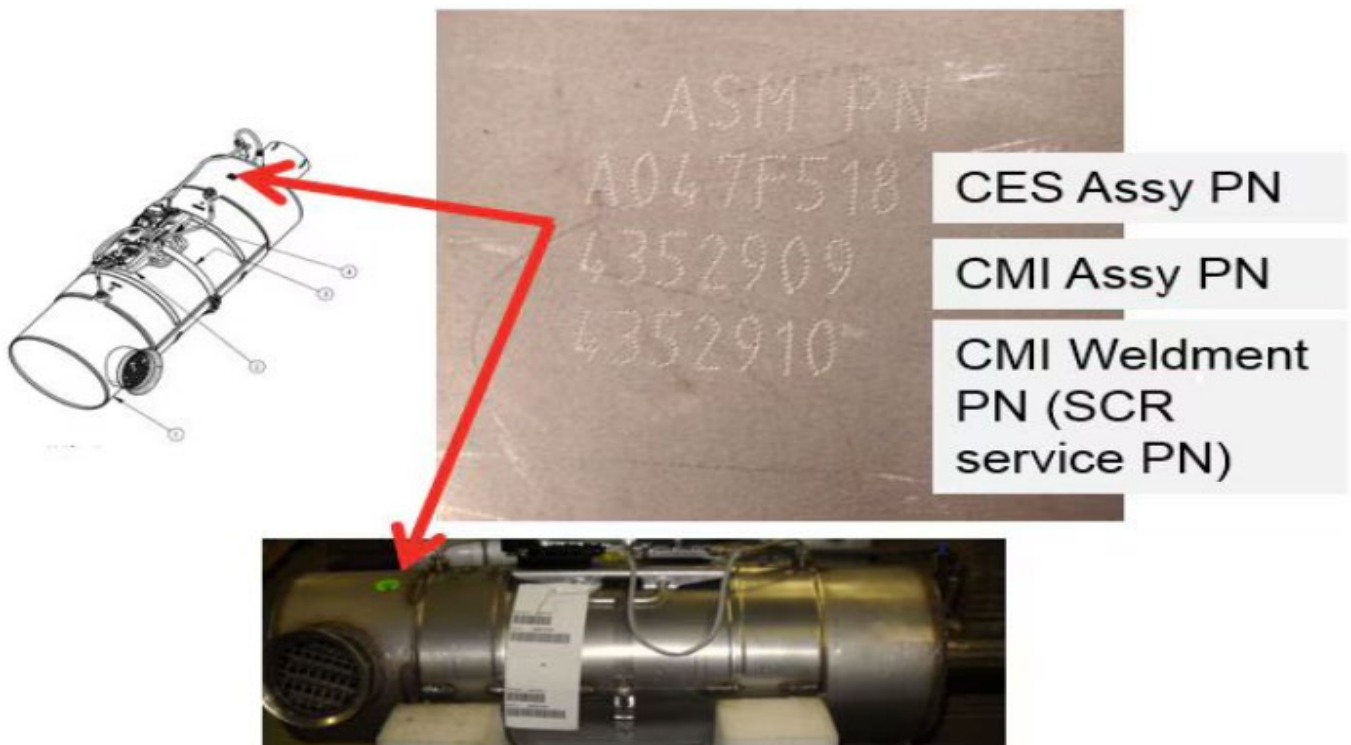
Finding Aftertreatment Serial & Part Numbers

Finding the Aftertreatment Images

If you have the DPF Serial Number, add it to the search box and click on the Search Icon to continue. If you need to locate the Aftertreatment number, please click on the question mark below to see example locations.

SCR Example

SCR Example:

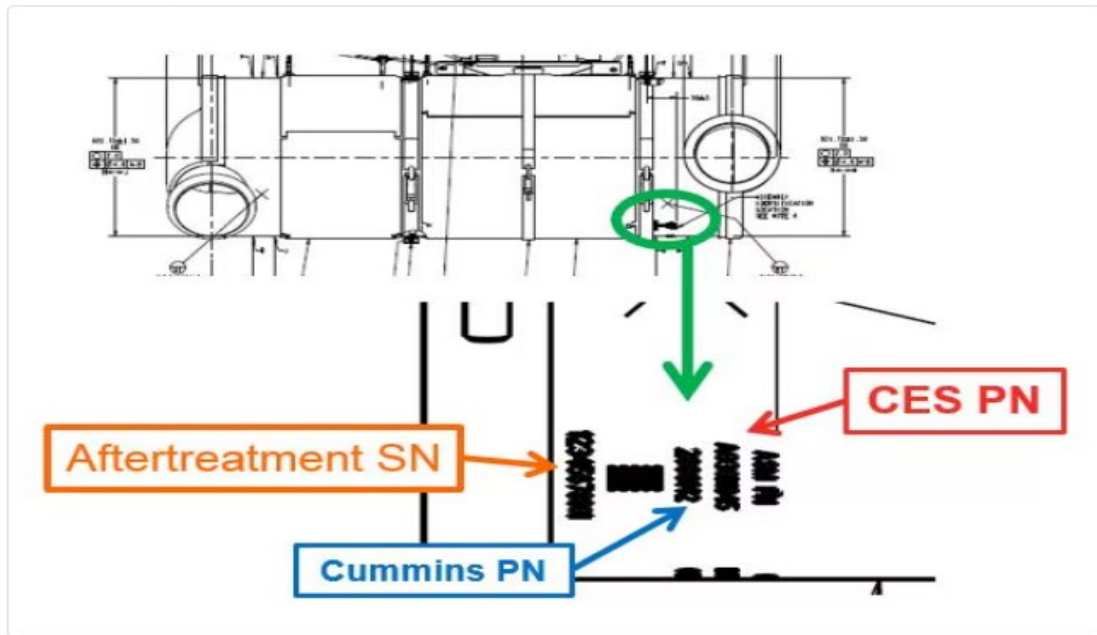


Digital Service Tools

Finding Aftertreatment Serial & Part Numbers

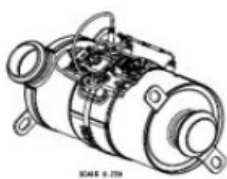
DPF Diagram Example

DPF Example:



DOC Example

DOC Example:



CES Assy
CMI Assy
CMI Weldment
PN (DOC
service PN)

